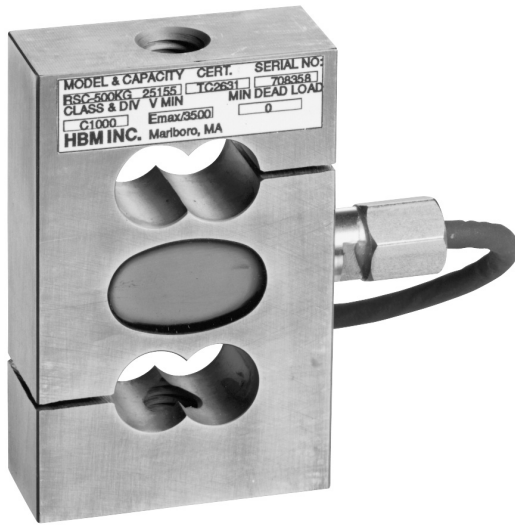




# RSCA...

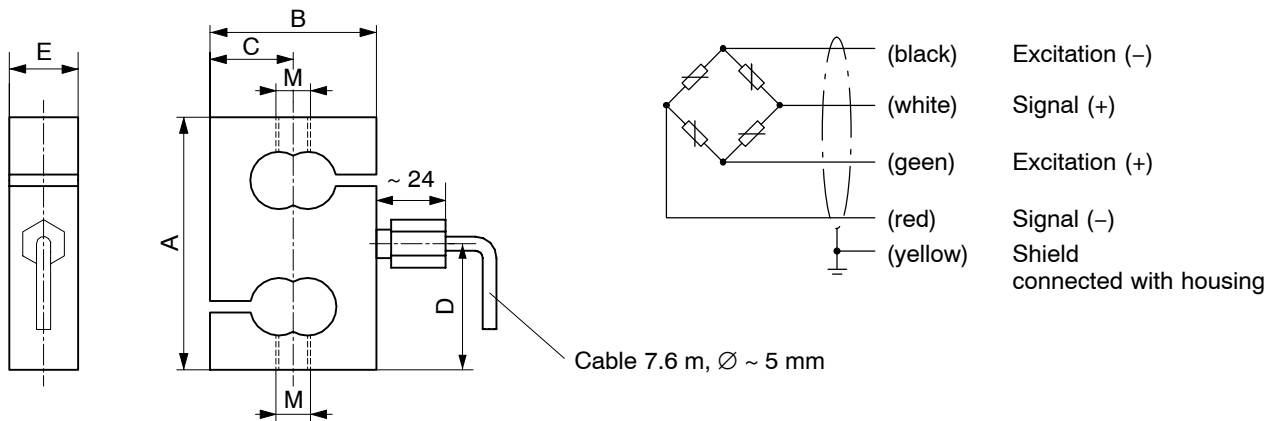
Load cells



## Special features

- Load cell with strain gage measuring system
- Nominal (rated) capacities: 50 kg ... 5 t
- Stainless steel
- Legal for trade verification up to 3000 d (OIML R60)
- Meets EMC / ESD requirements according to EN 45 501
- Explosion proof versions according to ATEX 95 (optional)

Dimensions (in mm; 1 mm= 0.03937 inches)



E <sub>max</sub> RSCA...	A	B	C	D	E	M
50 kg; 100 kg	62	50.8	25.4	31	15	M8x1.25
200 kg; 500 kg; 1 t	87.3	57.2	28.6	43.7	24	M12x1.75
2 t	100	69.8	34.9	50	30.2	M24x2
5 t	100	76.2	38.1	50	36.6	M24x2

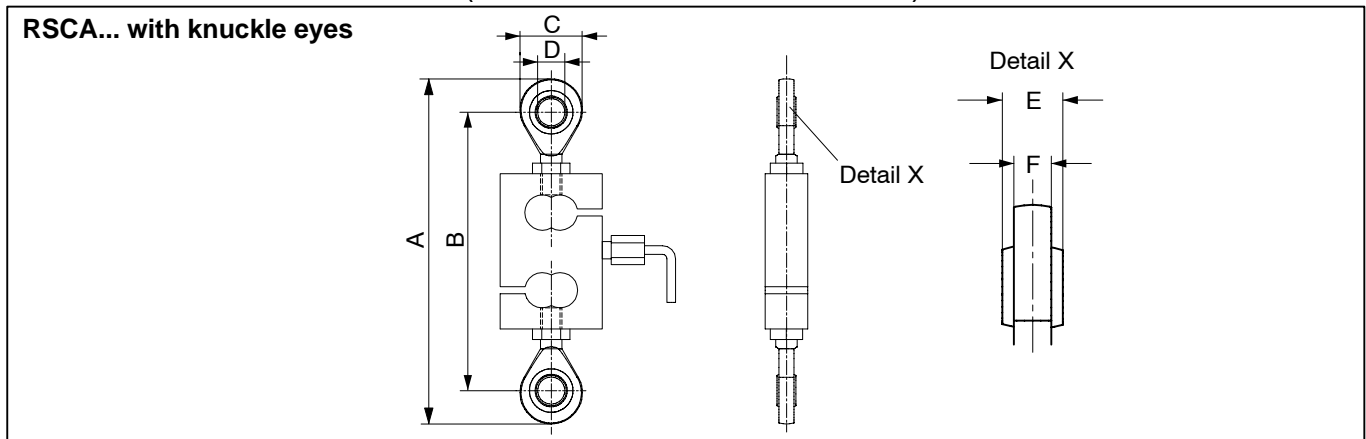
## Technical Data

Type	RSCA C1							RSCA C3				
Accuracy class according to OIML R 60	D1							C3				
Max. numbers of load cell intervals ( $n_{LC}$ )	1000							3000				
Nominal (rated) capacity ( $E_{max}$ )	50 kg	100 kg	200 kg	500 kg	1 t	2 t	5 t	500 kg	1 t	2 t	5 t	
Minimum LC verification interval ( $v_{min}$ )	0.0286							0.0120				
Sensitivity ( $C_n$ )	2							2				
Sensitivity tolerance	± 0.2500							± 0.2500				
Temperature effect on sensitivity ( $TK_C$ ) <sup>1)</sup>	± 0.0230 <sup>1)</sup>							± 0.0140 <sup>1)</sup>				
Temperature effect on zero signal ( $TK_0$ )	± 0.0400							± 0.0170				
Hysteresis error ( $d_{hy}$ ) <sup>1)</sup>	± 0.0500 <sup>1)</sup>							± 0.0170 <sup>1)</sup>				
Non-Linearity ( $d_{lin}$ ) <sup>1)</sup>	± 0.1000 <sup>1)</sup>							± 0.0180 <sup>1)</sup>				
Creep ( $d_{cr}$ ) 30 min.	± 0.0490							± 0.0250				
Input resistance ( $R_{LC}$ ) (nominal)	350							350				
Output resistance ( $R_0$ )	350 ± 1.5							350 ± 1.5				
Reference excitation voltage ( $U_{ref}$ )	5							5				
Nominal range of excitation voltage ( $B_U$ )	0.5 ... 12							0.5 ... 12				
Insulation resistance ( $R_{is}$ )	> 5							> 5				
Nominal range of ambient temperature ( $B_T$ )	-10 ... +40 [+14 ... +104]							-10 ... +40 [+14 ... +104]				
Service temperature range ( $B_{tu}$ )	-30 ... +70 [-22 ... +158]							-30 ... +70 [-22 ... +158]				
Storage temperature range ( $B_{st}$ )	-50 ... +85 [-58 ... +185]							-50 ... +85 [-58 ... +185]				
Limit load ( $E_L$ )	150							150				
Breaking load ( $E_d$ )	250							250				
Permissible dynamic load ( $F_{srel}$ ) (vibration amplitude according to DIN 50100)	70							70				
Deflection at $E_{max}$ ( $s_{nom}$ ), approx.	mm		0.15		0.25	0.38	0.46	0.15	0.25	0.38	0.46	
Weight (G) with cable, approx.	kg		0.4		0.77		1.6		1.8		0.77	
Protection class accord. to EN60529 (IEC529)	IP65 (tightened test conditions 1 m water column / 30 min.)											
Material: Measuring body / Application sealing Cable fitting / Cable sheath	stainless steel / Polyurethane stainless steel, gasket from Perbunan / Polyurethane											

<sup>1)</sup> The data for Non-Linearity ( $d_{lin}$ ), Hysteresis error ( $d_{hy}$ ) and Temperature effect on sensitivity ( $TK_C$ ) are typical values. The sum of these data meets the requirements according to OIML R60.

Optionally Explosion-proof versions according to ATEX: II 3 G EEx nA II T6 (Zone 2)  
II 3 D IP65 (Zone 22 for non-conductive dust)

## Dimensions and Accessories (in mm; 1 mm = 0.03937 inches)



$E_{max}$ RSCA...	Knuckle eyes	A	B	∅ C	∅ DH7	E	F
50 kg + 100 kg	U1R/200KG/ZGW (2x)	133 ... 154	109 ... 130	24	8	12	9
200 kg; 500 kg; 1 t	U2A/1T/ZGUW (2x)	190 ... 203	158 ... 171	32	12	16	12
2 t	U2A/5T/ZGUW (2x)	291 ... 320	231 ... 260	60	25	31	22
5 t	U2A/5T/ZGUW (2x)	314 ... 320	260 ... 266	60	25	31	22

Modifications reserved.

All details describe our products in general form only. They are not to be understood as express warranty and do not constitute any liability whatsoever.

Hottinger Baldwin Messtechnik GmbH

Im Tiefen See 45, D-64293 Darmstadt, Germany

Tel.: +49 6151 803-0 Fax: +49 6151 8039100

Email: [support@hbm.com](mailto:support@hbm.com) Internet: [www.hbm.com](http://www.hbm.com)



measurement with confidence