

PW2AC3/...

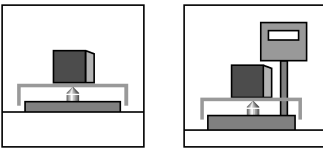
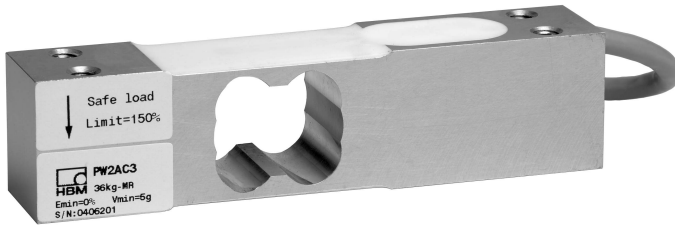
Single point load cells

Special features

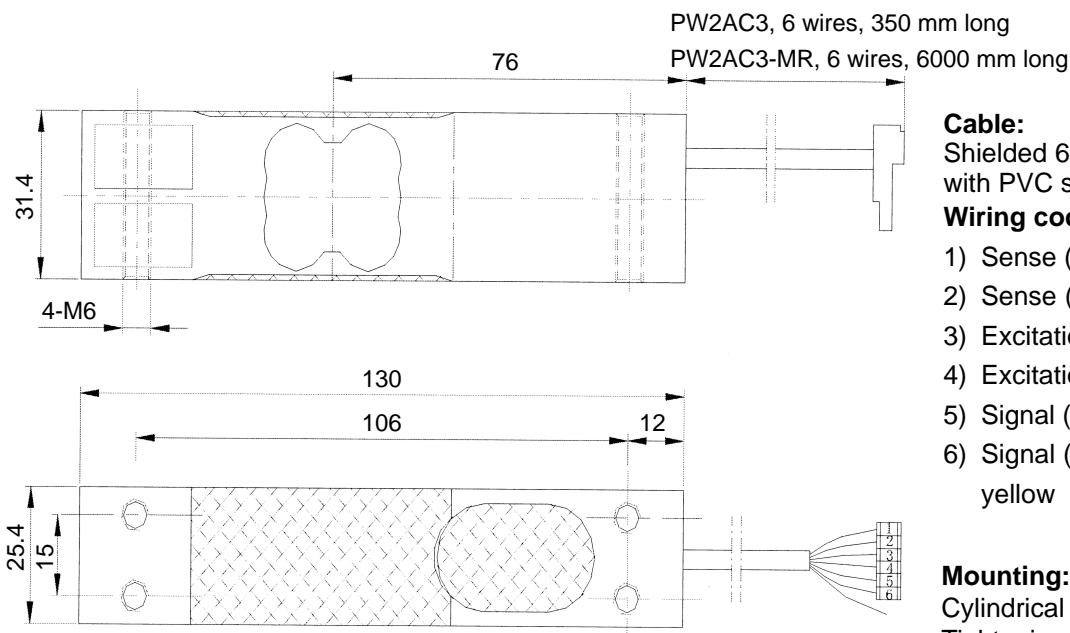
- Accuracy class C3 with OIML-R60 test report
- Max. capacities: 7.2 kg ... 72 kg
- Off center load compensated (OIML R76)
- Degree of protection IP65 (according to IEC 529)
- Shielded connection cable
- 6-wire circuit

Version PW2AC3-MR:

- Reduced minimum LC verification interval (v_{min}) for multi range applications
- Parallel connection of equal LC possible
- Cable length: 6 m



Dimensions (in mm; 1 mm = 0.03937 inches)



Specifications

Type		PW2AC3					PW2AC3-MR				
Accuracy class ¹⁾		C3					C3MR				
Number of load cell intervals (n _{LC})		3000									
Maximum capacity (E _{max})	kg	7.2	12	18	36	72	7.2	12	18	36	72
Minimum LC verification interval (v _{min})	g	1	2	5	10	20	0.5	1	2	5	10
Temperature effect on zero balance (TK ₀)	% of C _n / 10 K	± 0.0194	± 0.0233	± 0.0389	± 0.0389	± 0.0389	± 0.0098	± 0.0116	± 0.0155	± 0.0194	± 0.0194
Max. platform size	mm	380 x 380									
Sensitivity (C _n)	mV/V	2.0 ± 0.2					2.0 ± 0.002				
Zero balance	mV/V	0 ± 0.1					0 ± 0.1				
Temperature effect on sensitivity (TK _C) ²⁾ in the temperature range +20 ... +40 °C [+70 ... +105 °F] -10 ... +20 °C [+15 ... +70 °F]	% of C _n / 10 K	± 0.0175 ± 0.0117					± 0.0175 ± 0.0117				
Hysteresis error (d _{hy}) ²⁾ Non-linearity (d _{lin}) ²⁾ Minimum dead load output return (DR) Off center load error ³⁾	% of C _n	± 0.0150 ± 0.0150 ± 0.0166 ± 0.0233					± 0.0150 ± 0.0150 ± 0.0166 ± 0.0233				
Input resistance (R _{LC}) Output resistance (R ₀)	Ω	300 ... 500 300 ... 500					420 ± 10 350 ± 0.3				
Reference excitation voltage (U _{ref}) Max. excitation voltage (B _U)	V	5 1 ... 15					5 1 ... 15				
Insulation resistance (R _{is}) at 100 V _{DC}	GΩ	>2					>2				
Nominal temperature range (B _T) Service temperature range (B _{tu}) Storage temperature range (B _{tl})	°C [°F]	-10 ... +40 [+14 ... +104] -10 ... +50 [+14 ... +122] -25 ... +70 [-13 ... +158]					-10 ... +40 [+14 ... +104] -10 ... +50 [+14 ... +122] -25 ... +70 [-13 ... +158]				
Safe load limit (E _L) [*]	% of E _{max}	150					150				
[*]) at max. eccentricity	mm	160					160				
Lateral load limit (E _{lq}), static Breaking load (E _d)	% of E _{max}	300 300					300 300				
Deflection at E _{max} (s _{nom}), approx.	mm	< 0.4					< 0.4				
Weight (G), approx.	kg	0.25					0.25				
Protection class according to EN 60529 (IEC 529)		IP65					IP65				
Material: Measuring element Coating Cable sheath		Aluminum Silicone rubber PVC					Aluminum Silicone rubber PVC				

¹⁾ In accordance to OIML-R60 with P_{LC} = 0.7

²⁾ The data for Non-linearity (d_{lin}), Hysteresis error (d_{hy}) and Temperature effect on sensitivity (TK_C) are typical values. The sum of these data meets the requirements according to OIML R60.

³⁾ According to OIML R76

Modifications reserved.

All details describe our products in general form only. They are not to be understood as express warranty and do not constitute any liability whatsoever.

Hottinger Baldwin Messtechnik GmbH

Im Tiefen See 45, D-64293 Darmstadt, Germany

Tel.: +49 6151 803-0 Fax: +49 6151 803 9100

Email: support@hbm.com Internet: www.hbm.com



measurement with confidence